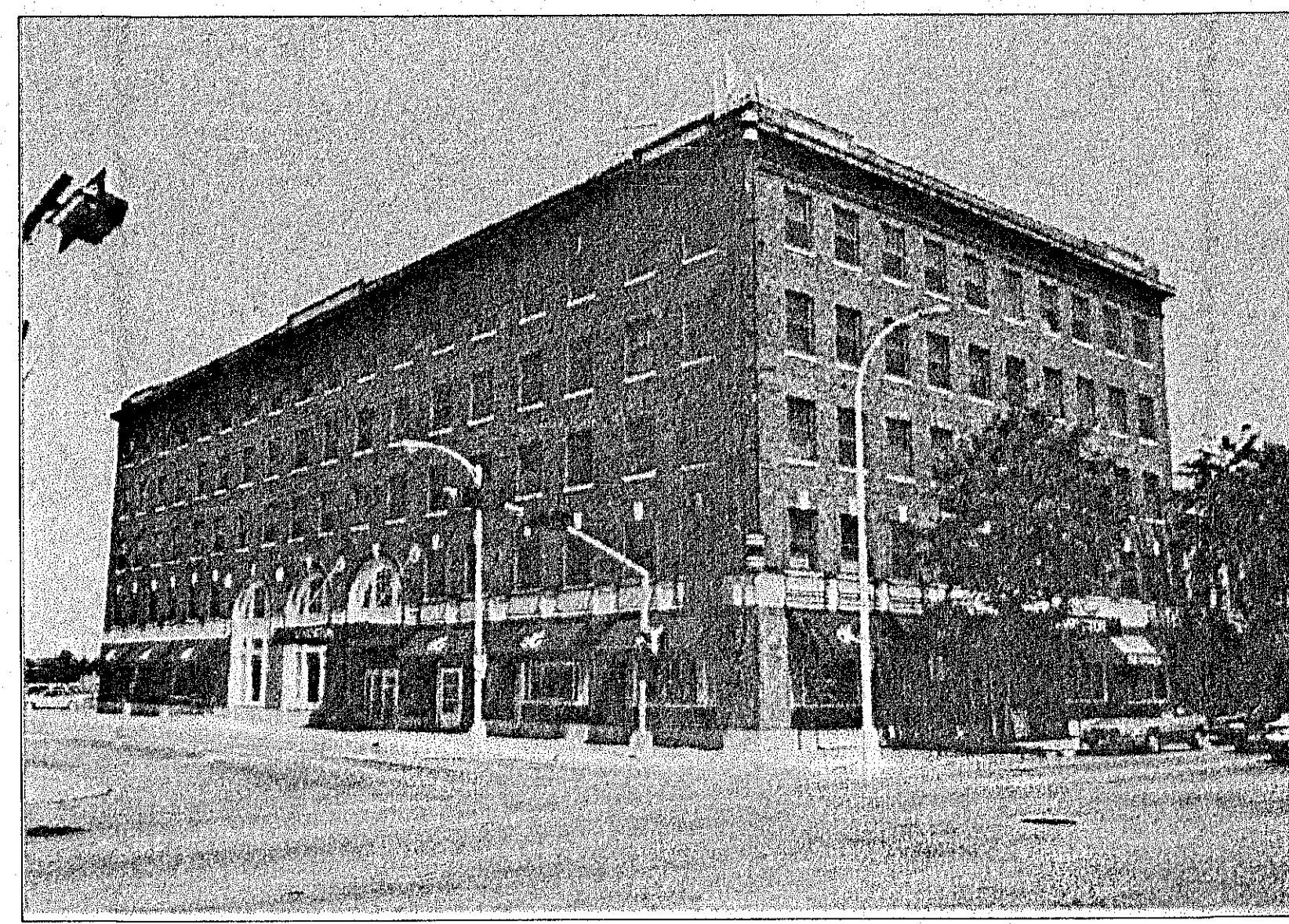


West Elevation

T.O. BLDG.
 ELEV. 159'-0"
 T.O. CONC.
 ELEV. 155'-9"
 CRAWL SPACE FLOOR
 T.O. CONC. ELEV. 153'-0"
 10'
 FIFTH FLOOR
 T.O. CONC. ELEV. 143'-0"
 10'
 FOURTH FLOOR
 T.O. CONC. ELEV. 133'-0"
 10'
 THIRD FLOOR
 T.O. CONC. ELEV. 123'-0"
 10'
 SECOND FLOOR
 T.O. CONC. ELEV. 113'-0"
 13'
 FIRST FLOOR
 FIN. FLR. ELEV. 100'-0"
 11'-4"
 BASEMENT FLOOR
 FIN. FLR. ELEV. 88'-8"



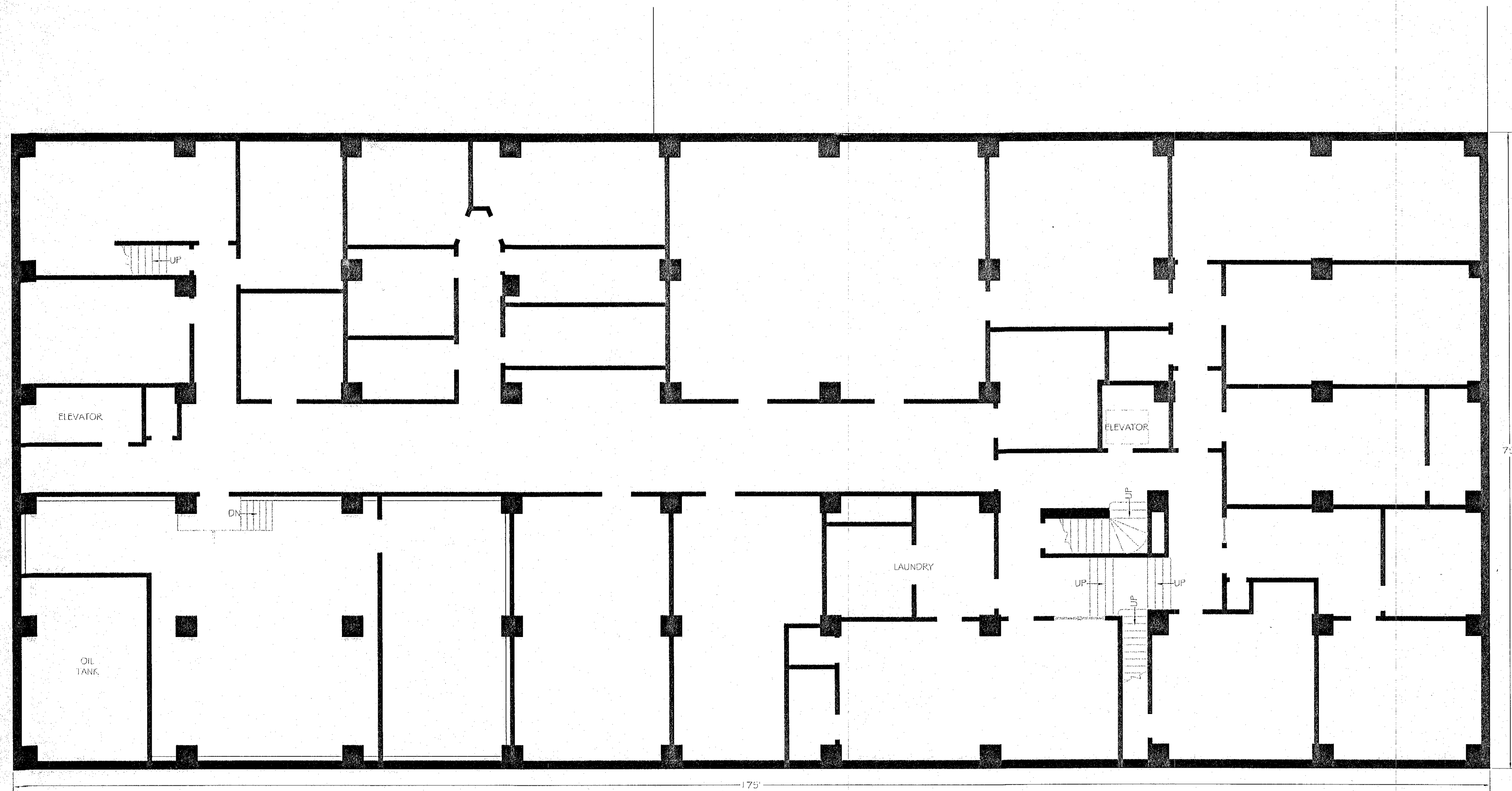
South Elevation



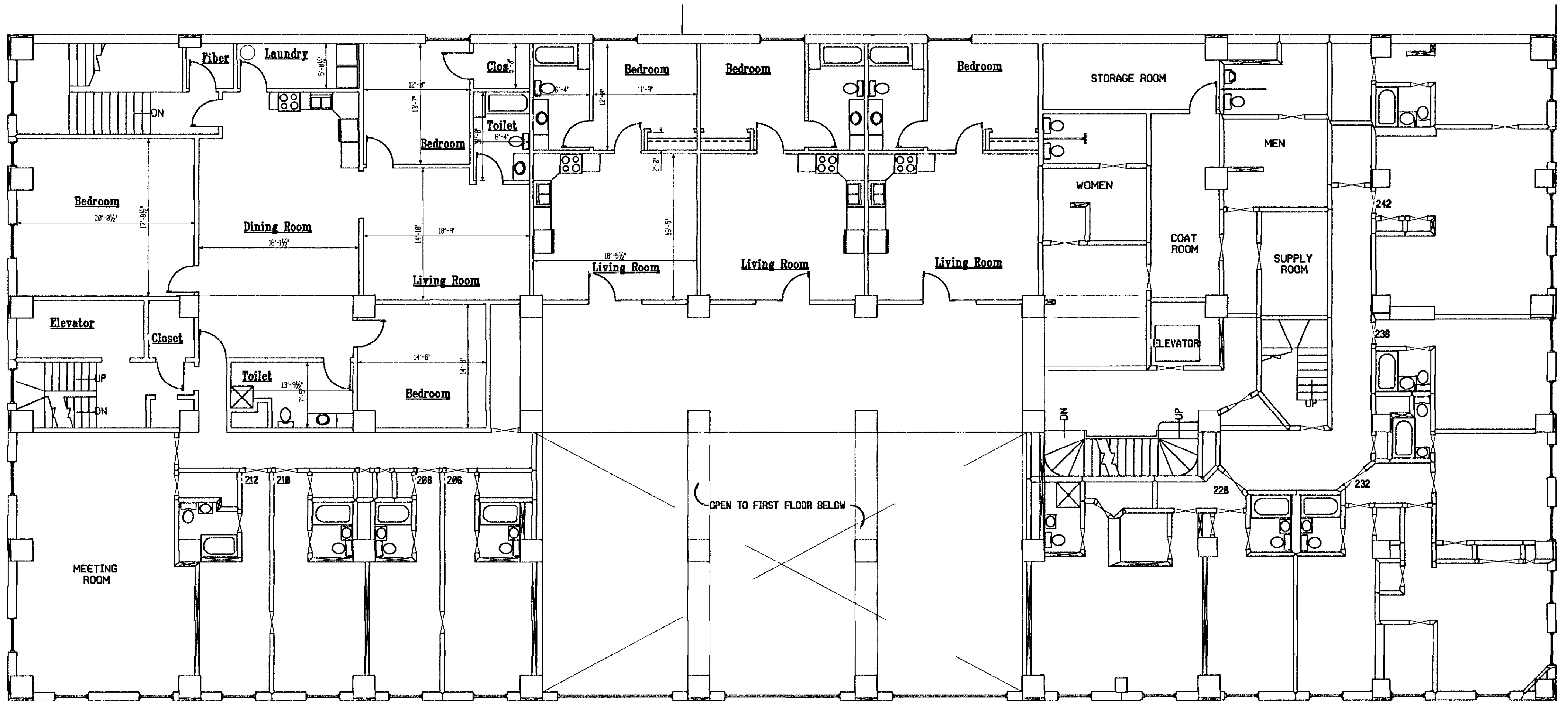
September 1999

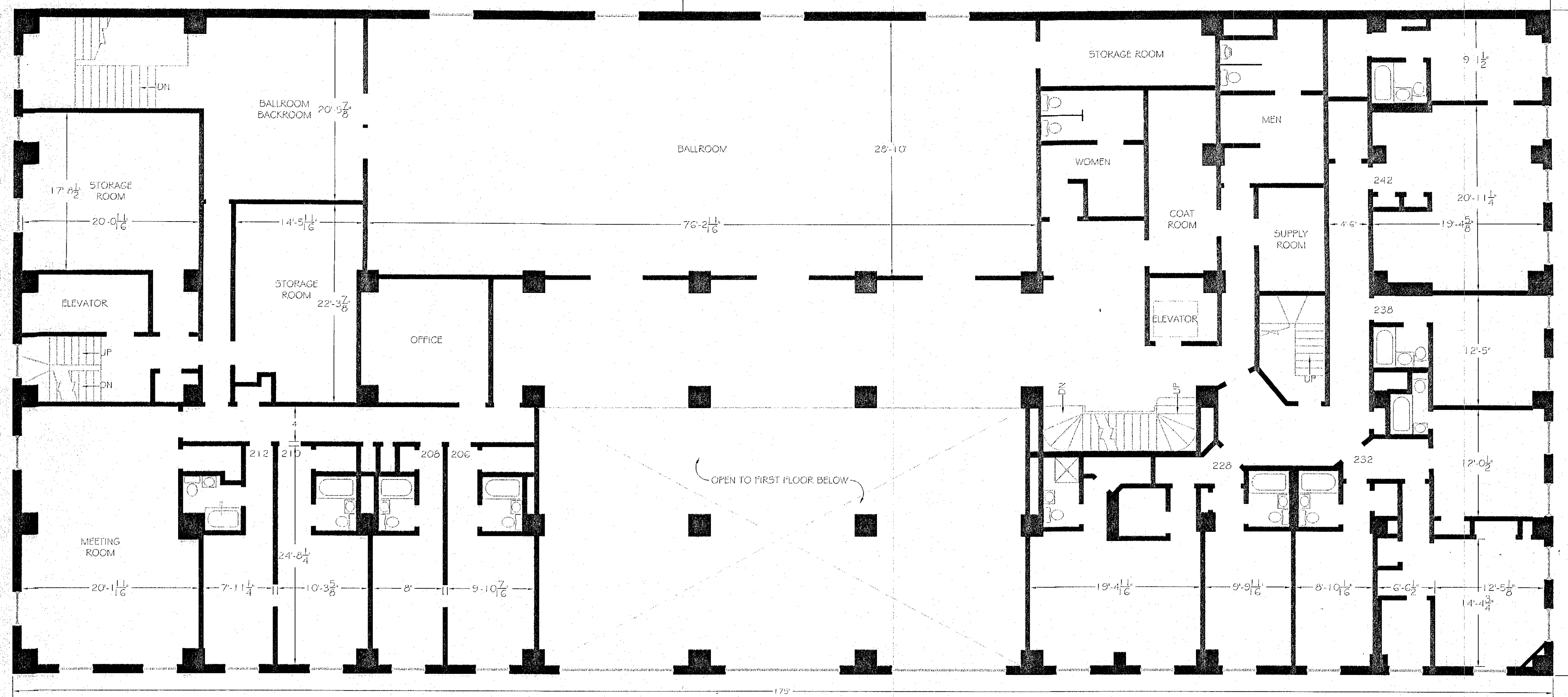
Buck, Inc

<p>October 31, 1999 Exterior Elevations Scale: 1/8"=1'-0"</p>	<p>THE KENSINGTON 108 NORTH 4TH STREET NORFOLK, NEBRASKA 68701 NORFOLK HOUSING AUTHORITY PHONE (402) 644-8738 FAX (402) 644-2587</p>	
--	--	--

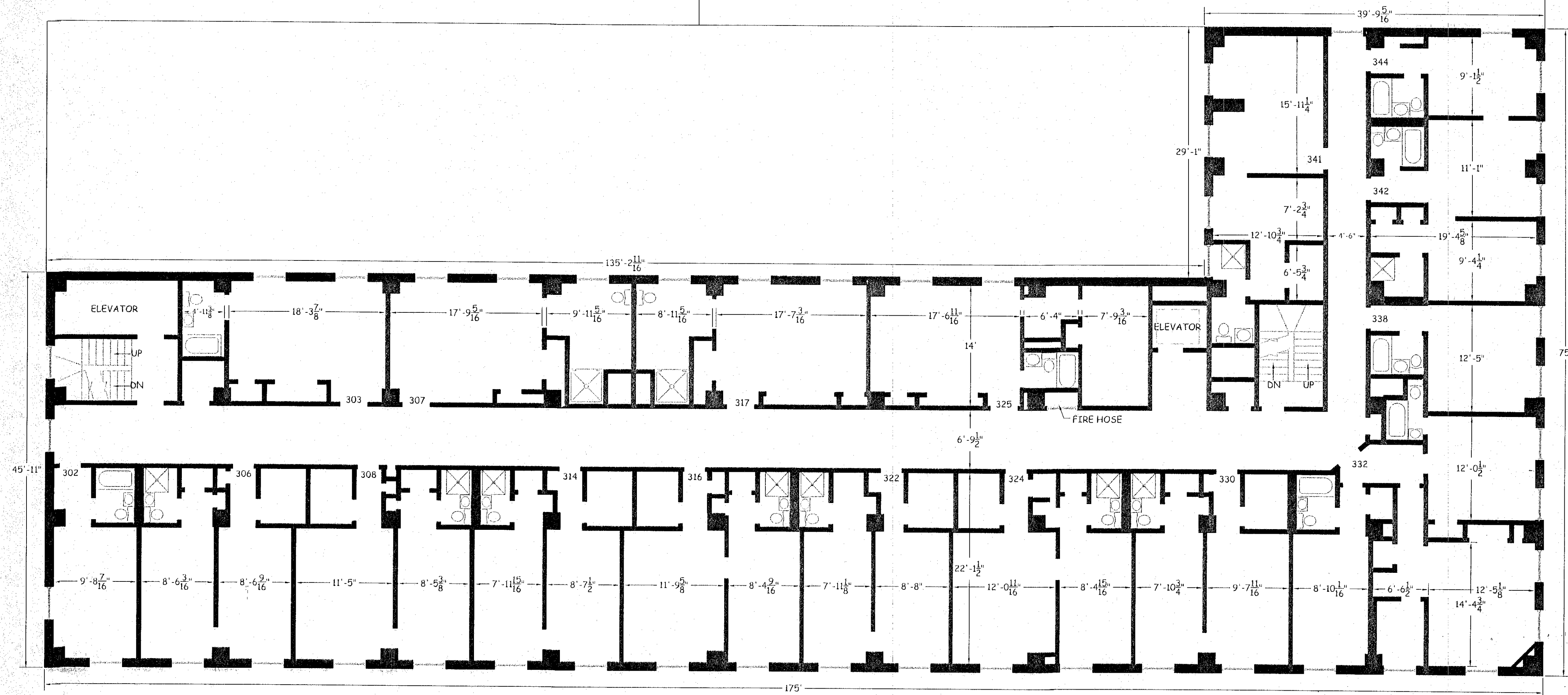


<p>October 31, 1999 Basement Floor Plan Scale: 1/8" = 1'-0"</p>	<p>THE KENSINGTON 108 NORTH 4TH STREET NORFOLK, NEBRASKA 68701 NORFOLK HOUSING AUTHORITY PHONE (402) 644-8738 FAX (402) 644-2587</p>	
--	--	--



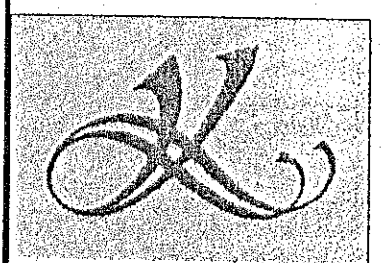


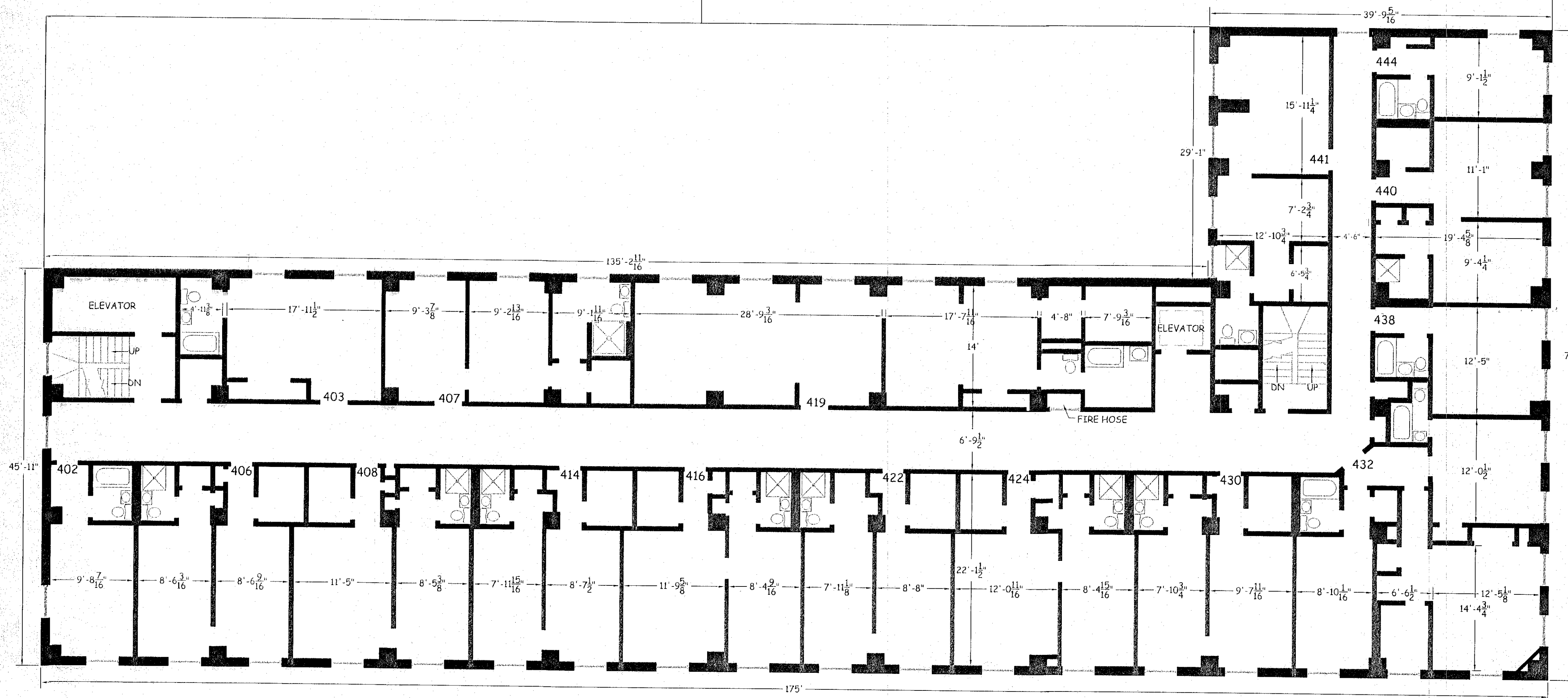
<p>October 31, 1999 Second Floor Plan Scale: 1/8" = 1'-0"</p>	<p>THE KENSINGTON 108 NORTH 4TH STREET NORFOLK, NEBRASKA 68701 NORFOLK HOUSING AUTHORITY PHONE (402) 644-8738 FAX (402) 644-2587</p>	
--	--	--



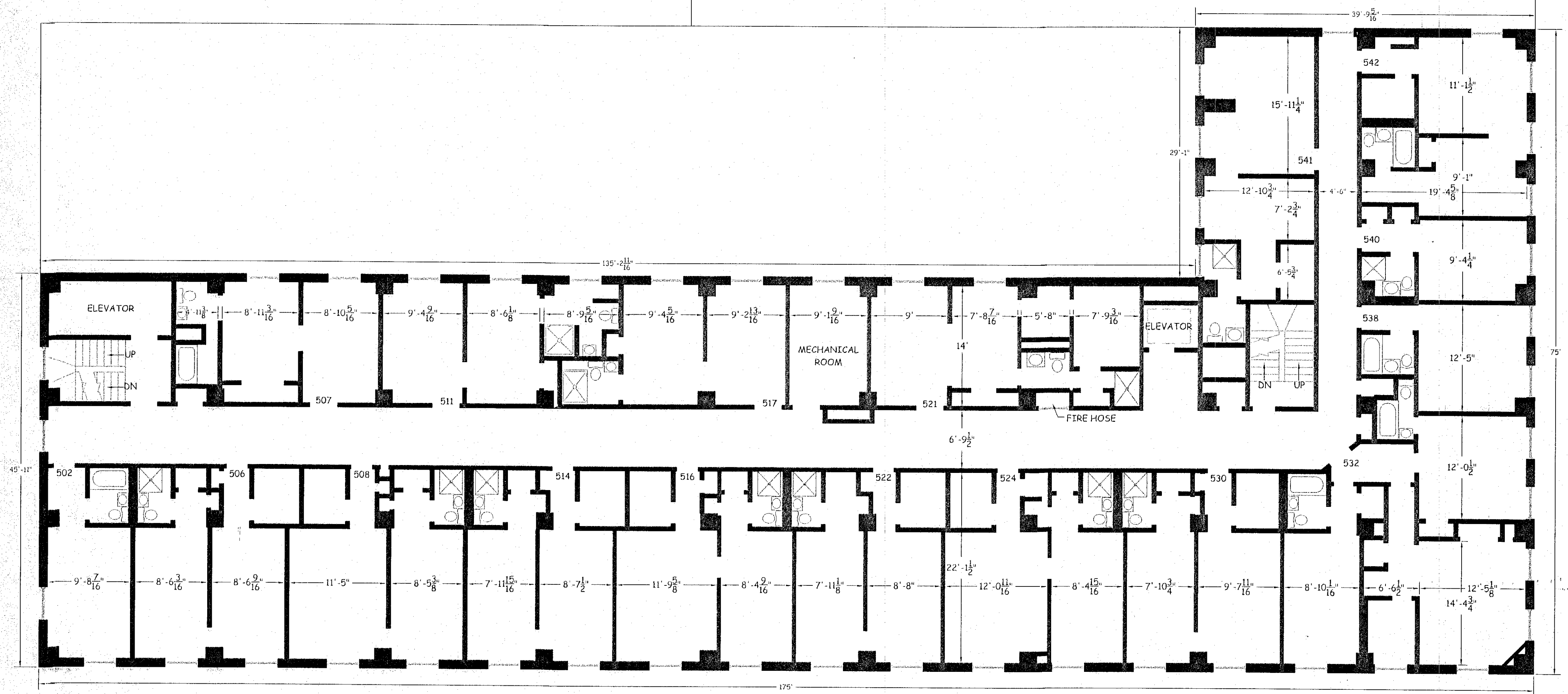
October 31, 1999
Third Floor Plan
 Scale: 1/8" = 1'-0"

THE KENSINGTON
 108 NORTH 4TH STREET
 NORFOLK, NEBRASKA 68701
 NORFOLK HOUSING AUTHORITY
 PHONE (402) 644-8738 FAX (402) 644-2587





<p>October 31, 1999 Fourth Floor Plan Scale: 1/8" = 1'-0"</p>	<p>THE KENSINGTON 108 NORTH 4TH STREET NORFOLK, NEBRASKA 68701 NORFOLK HOUSING AUTHORITY PHONE (402) 644-8738 FAX (402) 644-2587</p>	
--	--	--



<p>October 31, 1999 Fifth Floor Plan Scale: 1/8"=1'-0"</p>	<p>THE KENSINGTON 108 NORTH 4TH STREET NORFOLK, NEBRASKA 68701 NORFOLK HOUSING AUTHORITY PHONE (402) 644-8738 FAX (402) 644-2587</p>	
---	--	--

THE KENSINGTON WINDOW REPLACEMENT

108 N. 4th Street ▪ Norfolk, NE ▪ 68701 ▪ March 28, 2011 (RE-BID PACKAGE)

APM Project # 10096



SHEET INDEX -

- CO.1 COVER SHEET & GENERAL INFORMATION
- A1.1 SECOND & THIRD LEVEL FLOOR PLANS
- A1.2 FOURTH & FIFTH LEVEL FLOOR PLANS
- A2.1 EXTERIOR ELEVATIONS
- A2.2 EXTERIOR ELEVATIONS
- A6.1 WINDOW SCHEDULES
- A6.2 WINDOW SCHEDULES AND WINDOW DETAILS

STANDARD ABBREVIATIONS

&	And	EQUIP.	Equipment	NO.	Number	UNF.	Unfinished
L	Angle	E.W.C.	Elec. Water Cooler	NOM.	Nominal	U.N.O.	Unless Noted Otherwise
@	At	EXIST.	Existing	N.T.S.	Not to Scale	UR.	Urinal
⊕	Centerline	EXP.	Expansion	O.A.	Overall	V.B.	Vinyl Base
∅	Diameter or Round	EXT.	Exterior	O.C.	On Center	VER.	Verify
#	Pound or Number	F.D.	Floor Drain	O.D.	Outside Diameter	VERT.	Vertical
A/C	Air Conditioning	FDN.	Foundation	O.F.C.I.	Owner Furnished Contractor Installed	VEST.	Vestibule
ACOUS.	Acoustical	F.E.	Fire Extinguisher	OFF.	Office	VIN.	Vinyl
A.C.T.	Acoust Ceiling Tile	F.E.C.	Fire Extinguisher Cabinet	O.F.O.I.	Owner Furnished, Owner Installed	V.T.	Vinyl Tile
A.D.	Area Drain	FIN.	Finish	OH.	Overhead	W.	West
ADJ.	Adjustable	FL.	Floor	OPNG.	Opening	W/	With
A.F.F.	Above Finish Floor	FLASH.	Flashing	OPP.	Opposite	W.C.	Water Closet
AGGR.	Aggregate	FLUOR.	Fluorescent	PL.	Plate	WD.	Wood
ALT.	Alternate	F.O.C.	Face of Concrete	PLAM.	Plastic Laminate	W/O	Without
ALUM.	Aluminum	F.O.F.	Face of Finish	PLAS.	Plaster	WP.	Waterproof
APPROX.	Approximate	F.O.S.	Face of Studs	PLYWD.	Plywood	WSCOT.	Wainscot
ARCH.	Architectural	FP.	Fireproof	PNT.	Paint	WT.	Weight
ASPH.	Asphalt	FT.	Foot or Feet	PR.	Pair	W.W.M.	Welded Wire Mesh
BD.	Board	FTG.	Footing	PRCST.	Pre-Cast		
BITUM.	Bituminous	FURR.	Furring	PREFAB.	Pre-fabricated		
BLDG.	Building	GALV.	Galvanized	PVC	Polyvinyl Chloride		
BLK.	Block	GA.	Gauge	Q.T.	Quarry Tile		
BLKG.	Blocking	GND.	Ground	R.	Riser		
BM.	Beam	GRD.	Grade	R.A.	Return Air		
BOT.	Bottom	GWB	Gypsum Board	RAD.	Radius		
BSMT.	Basement	H.B.	Hose Bib	R.D.	Roof Drain		
CAB.	Cabinet	H.C.	Hollow Core	HDWD.	Hardwood		
CEM.	Cement	H.D. PART.	High Density Particle Board	REF.	Reference		
CER.	Ceramic	H.M.	Hollow Metal	REFR.	Refrigerator		
C.F.	Cubic Foot	HORIZ.	Horizontal	REG.	Register		
C.G.	Corner Guard	HT.	Height	REINF.	Reinforce		
C.J.	Control Joint	HTG.	Heating	REM.	Remove		
C.L.G.	Ceiling	I.D.	Inside Diameter	REQD.	Required		
CLR.	Clear	INCL.	Include	RESIL.	Resilient		
CMT.	Cement	INSUL.	Insulation	REV.	Reverse		
C.M.U.	Conc. Masonry Unit	INT.	Interior	RM.	Room		
CNTR.	Counter	JAN.	Janitor	R.O.	Rough Opening		
C.O.	Cased Opening	JT.	Joint	S.	South		
COL.	Column	KIT.	Kitchen	S.C.	Solid Core		
CONC.	Concrete	LAB.	Laboratory	SCHED.	Schedule		
CONN.	Connection	LAM.	Laminate	S.D.	Storm Drain		
CONSTR.	Construction	LAV.	Lavatory	SECT.	Section		
CONT.	Continuous	LVR.	Louver	SHT.	Sheet		
CONTR.	Contractor	L.W.	Lightweight	SHWR.	Shower		
CPT.	Carpet	MAS.	Masonry	SIM.	Similar		
CSK.	Countersink	MAX.	Maximum	SPEC.	Specification		
C.T.	Ceramic Tile	MECH.	Mechanical	SO.	Square		
C.Y.	Cubic Yard	MEMB.	Membrane	S.S.	Stainless Steel		
DBL.	Double	MET.	Metal	STA.	Station		
DEMO.	Demolish	MFR.	Manufacturer	STD.	Standard		
DET.	Detail	MH.	Manhole	STL.	Steel		
D.F.	Drinking Fountain	MIN.	Minimum	STOR.	Storage		
DIAG.	Diagonal	MISC.	Miscellaneous	STR.	Structural		
DIAM.	Diameter	M.O.	Masonry Opening	SUSP.	Suspended		
DIM.	Dimension	MOD.	Modular	SYM.	Symmetrical		
DISP.	Dispenser	MT.	Mount	SYN.	Synthetic		
DIV.	Division	MTD.	Mounted	T.C.	Top Of Curb		
DN.	Down	MTL.	Material	T.G.	Top of Gutter		
DR.	Door	MUL.	Mullion	TEL.	Telephone		
DS.	Downspout	N.	North	TERR.	Terrazzo		
DWG.	Drawing	N.I.C.	Not In Contract	T&G	Tongue & Groove		
E.	East			THK.	Thick		
EA.	Each			TLT.	Tilet		
E.J.	Expansion Joint			T.O.M.	Top of Masonry		
EL.	Elevation			T.O.W.	Top of Wall		
ELEC.	Electrical			TR.	Tread		
ELEV.	Elevation			TV	Television		
ENCL.	Enclosure			TYP.	Typical		
EO.	Equal						

STANDARD ABBREVIATIONS

REFERENCE SYMBOLS (SEE ALSO INDIVIDUAL SHEET SYMBOL KEYS)		MATERIAL SYMBOLS	
	DETAIL NUMBER		EARTH
	SHEET NUMBER		GRANULAR FILL
	INTERIOR ELEVATION		CONCRETE
	DETAIL REFERENCE		CONCRETE BLOCK
	BUILDING SECTION		FACE BRICK
	GRID LINE		STEEL
	EXISTING ELEVATION		WOOD
	NEW ELEVATION		CONTINUOUS DIMENSION LUMBER
	DOOR NUMBER		NON-CONTINUOUS BLOCKING
	WINDOW TYPE		CERAMIC TILE OR QUARRY TILE
	TOILET ACCESSORY		BATT INSULATION
	WALL TYPE		RIGID INSULATION
	EXISTING CONTOURS		PLYWOOD
	NEW CONTOURS		STONE
	PROPERTY LINE		
	MATCH LINE		
	NORTH ARROW		
	PHOTO TAG		
	GENERAL NOTE FLAG		
	CEILING HEIGHT		
	ROOM NUMBER		
	KEY NOTE		

RE-BID

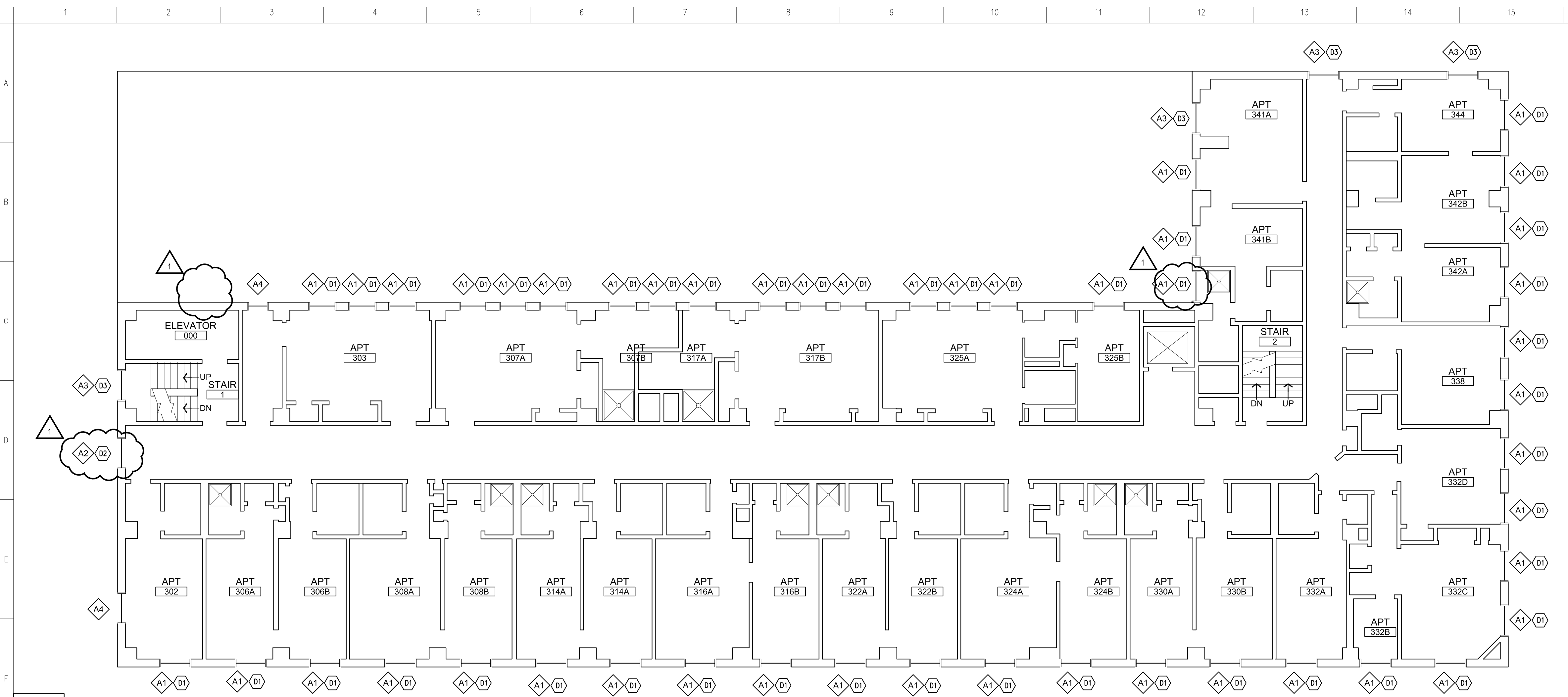
5-2-2011 - POST-BID MODIFICATIONS

ARCHITECT

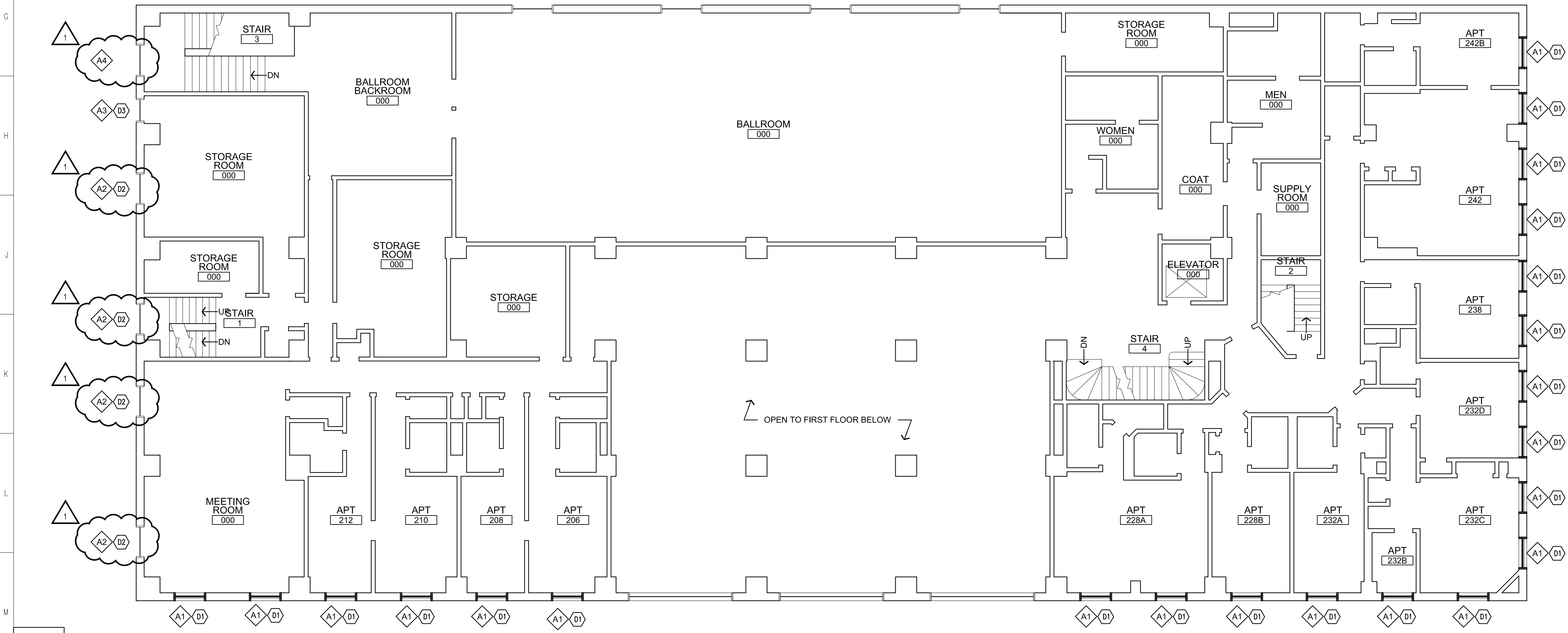
ALLEY POYNER MACCHIETTO
ARCHITECTURE
1516 CUMING STREET
OMAHA, NE, 68102
TEL. 402.341.1544

OWNER

NORFOLK HOUSING AGENCY
110 N. 4TH STREET
NORFOLK, NE 68701



F1 THIRD LEVEL FLOOR PLAN
 A1.1 SCALE: 1/8" = 1'-0"



M1 SECOND LEVEL FLOOR PLAN
 A1.1 SCALE: 1/8" = 1'-0"

(D1) DEMOLITION KEYED NOTES:

- D1. REMOVED EXISTING WOOD SASHES, ALUMINUM STORM WINDOW AND FRAME, AND COUNTERWEIGHTS. SEE M1/A6.2
- D2. REMOVE EXISTING STEEL SASHES, ALUMINUM STORM WINDOW AND FRAME, AND COUNTERWEIGHTS. SEE M10/A6.2
- D3. REMOVE EXISTING STORM WINDOWS AND FRAME. SEE D1/A6.2

(A1) GENERAL KEYED NOTES:

- A1. INSTALL NEW ALUMINUM WINDOW AND FRAME. PATCH HOLES LEFT BY STORM WINDOW FRAMES. SEE M6/A6.2. PAINT INTERIOR TRIM.
- A2. INSTALL NEW ALUMINUM WINDOW AND FRAME. PATCH HOLES LEFT BY STORM WINDOW FRAMES. SEE M14/A6.2. PAINT INTERIOR TRIM.
- A3. PAINT EXTERIOR AND INTERIOR OF EXISTING WINDOW. PATCH HOLES LEFT BY STORM WINDOWS AND INSTALL NEW ALUMINUM INTERIOR STORM WINDOW. SEE D1/A6.2. PAINT INTERIOR TRIM.
- A4. PAINT EXTERIOR OF EXISTING WINDOW FRAME.

THE KENSINGTON WINDOW REPLACEMENT

108 N. 4th Street
 Norfolk NE 68701



THE FOLLOWING PROJECT NOTES ARE TYPICAL AND APPLICABLE TO ALL PORTIONS OF THE BUILDING

1. ALL DIMENSIONS ARE FACE OF FINISH TO FACE OF FINISH UNLESS NOTED OTHERWISE.
2. DO NOT SCALE FROM DRAWINGS.
3. VERIFY ALL DIMENSIONS AND REPORT ANY DISCREPANCIES TO THE ARCHITECT IMMEDIATELY.
4. REFER TO WINDOW SCHEDULE ON SHEETS A6.1 AND A6.2 FOR WORK REQUIRED AT ALL WINDOWS.
5. SEAL ALL JOINTS AT WINDOWS.
6. INSULATE ALL VOIDS AND CAVITIES WITH EXPANDABLE FOAM INSULATION.

**ALLEY•POYNER
 MACCHIETTO**
 ARCHITECTURE
 1516 Cuming Street
 Omaha, NE 68102
 Ph: 402.341.1544
 Fx: 402.341.4735
 alleypoynern.com

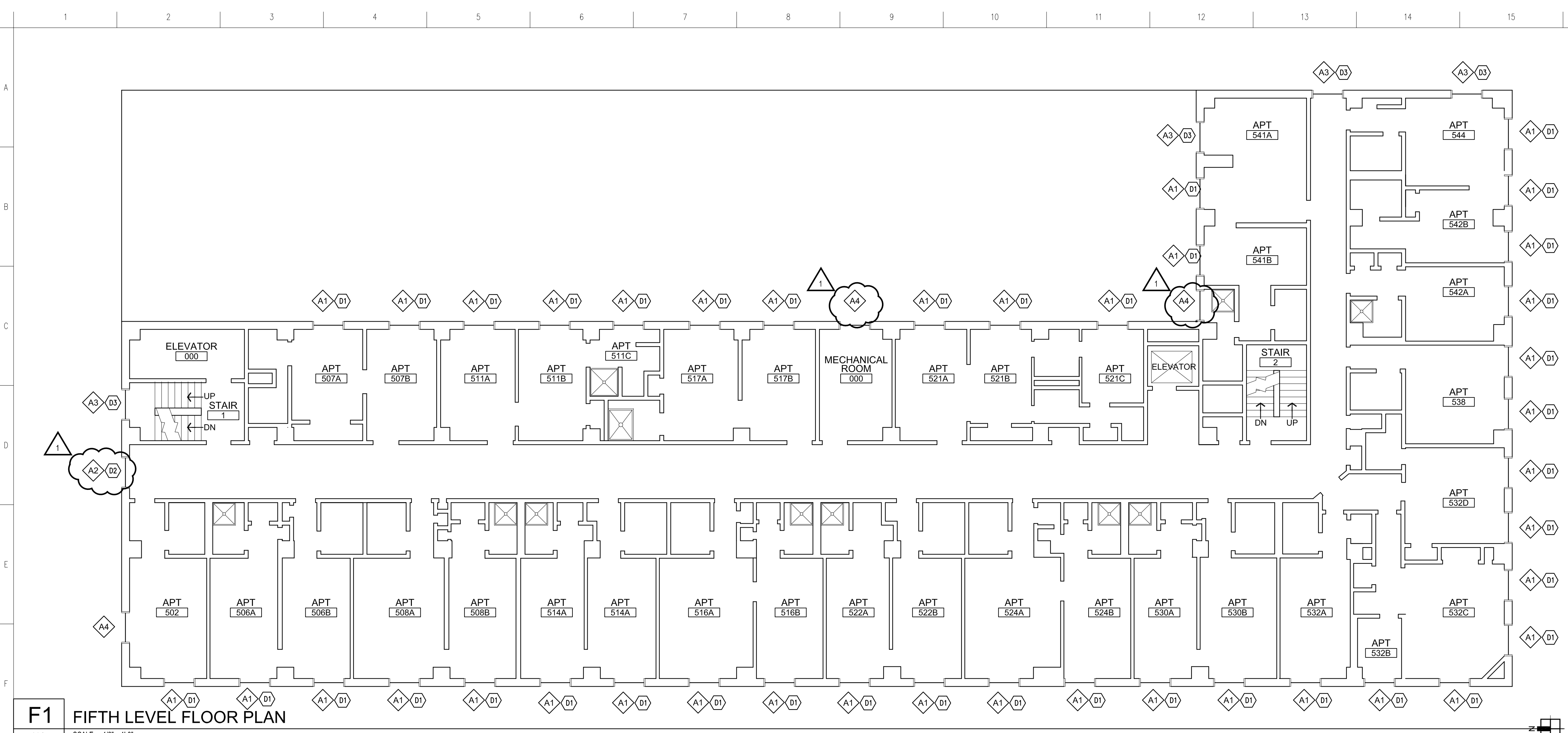


5-2-2011 - POST-BID

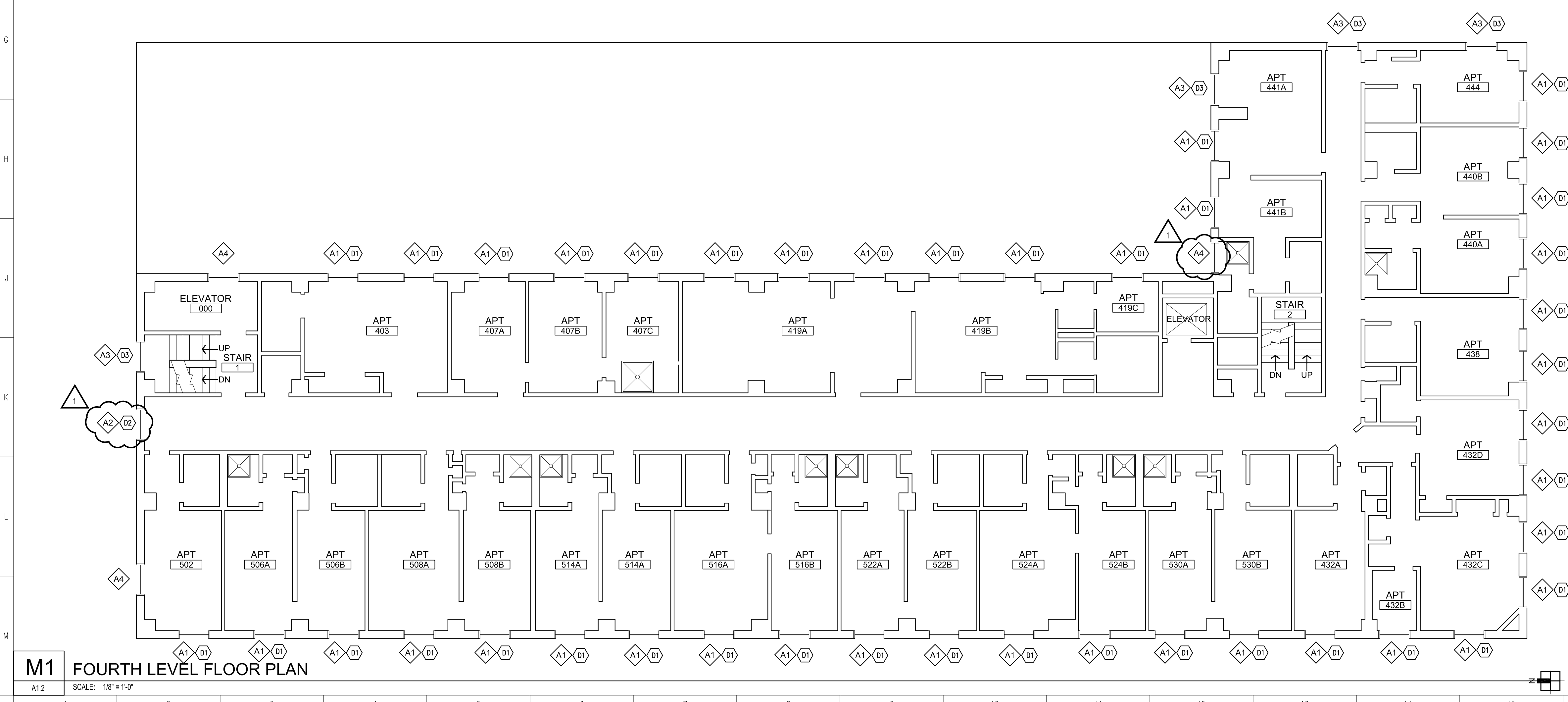
REVISION	DATE
PROJECT NUMBER: 10096	
DATE: 03/28/2011	
COPYRIGHT © 2011 ALLEY POYNER MACCHIETTO ARCHITECTURE, P.C.	

SECOND & THIRD LEVEL FLOOR PLANS

A1.1



F1 FIFTH LEVEL FLOOR PLAN
A1.2 SCALE: 1/8" = 1'-0"



M1 FOURTH LEVEL FLOOR PLAN
A1.2 SCALE: 1/8" = 1'-0"

(D1) DEMOLITION KEYED NOTES:

- D1. REMOVE EXISTING WOOD SASHES, ALUMINUM STORM WINDOW AND FRAME, AND COUNTERWEIGHTS. SEE M1/A6.2
- D2. REMOVE EXISTING STEEL SASHES, ALUMINUM STORM WINDOW AND FRAME, AND COUNTERWEIGHTS. SEE M10/A6.2
- D3. REMOVE EXISTING STORM WINDOWS AND FRAME. SEE D1/A6.2

(A1) GENERAL KEYED NOTES:

- A1. INSTALL NEW ALUMINUM WINDOW AND FRAME. PATCH HOLES LEFT BY STORM WINDOW FRAMES. SEE M6/A6.2. PAINT INTERIOR TRIM.
- A2. INSTALL NEW ALUMINUM WINDOW AND FRAME. PATCH HOLES LEFT BY STORM WINDOW FRAMES. SEE M14/A6.2. PAINT INTERIOR TRIM.
- A3. PAINT EXTERIOR AND INTERIOR OF EXISTING WINDOW. PATCH HOLES LEFT BY STORM WINDOWS AND INSTALL NEW ALUMINUM INTERIOR STORM WINDOW. SEE D1/A6.2. PAINT INTERIOR TRIM.
- A4. PAINT EXTERIOR OF EXISTING WINDOW FRAME.

THE KENSINGTON WINDOW REPLACEMENT

108 N. 4th Street
Norfolk NE 68701



THE FOLLOWING PROJECT NOTES ARE TYPICAL AND APPLICABLE TO ALL PORTIONS OF THE BUILDING

1. ALL DIMENSIONS ARE FACE OF FINISH TO FACE OF FINISH UNLESS NOTED OTHERWISE.
2. DO NOT SCALE FROM DRAWINGS.
3. VERIFY ALL DIMENSIONS AND REPORT ANY DISCREPANCIES TO THE ARCHITECT IMMEDIATELY.
4. REFER TO WINDOW SCHEDULE ON SHEETS A6.1 AND A6.2 FOR WORK REQUIRED AT ALL WINDOWS.
5. SEAL ALL JOINTS AT WINDOWS.
6. INSULATE ALL VOIDS AND CAVITIES WITH EXPANDABLE FOAM INSULATION.

**ALLEY•POYNER
MACCHIETTO
ARCHITECTURE**
1516 Cuming Street
Omaha, NE 68102
Ph: 402.341.1544
Fx: 402.341.4735
alleypoynern.com



5-2-2011 - POST-BID

REVISION	DATE
PROJECT NUMBER: 10096	
DATE: 03/28/2011	
COPYRIGHT © 2011 ALLEY POYNER MACCHIETTO ARCHITECTURE, P.C.	

FOURTH & FIFTH LEVEL FLOOR PLANS

A1.2



F1 EXTERIOR ELEVATION - WEST

A2.1 SCALE: 1/8" = 1'-0"

D1 DEMOLITION KEYED NOTES:

- D1. REMOVED EXISTING WOOD SASHES, ALUMINUM STORM WINDOW AND FRAME, AND COUNTERWEIGHTS. SEE M1/A6.2
- D2. REMOVE EXISTING STEEL SASHES, ALUMINUM STORM WINDOW AND FRAME, AND COUNTERWEIGHTS. SEE M10/A6.2
- D3. REMOVE EXISTING STORM WINDOWS AND FRAME. SEE D1/A6.2

A1 GENERAL KEYED NOTES:

- A1. INSTALL NEW ALUMINUM WINDOW AND FRAME. PATCH HOLES LEFT BY STORM WINDOW FRAMES. SEE M6/A6.2. PAINT INTERIOR TRIM.
- A2. INSTALL NEW ALUMINUM WINDOW AND FRAME. PATCH HOLES LEFT BY STORM WINDOW FRAMES. SEE M14/A6.2. PAINT INTERIOR TRIM.
- A3. PAINT EXTERIOR AND INTERIOR OF EXISTING WINDOW. PATCH HOLES LEFT BY STORM WINDOWS AND INSTALL NEW ALUMINUM INTERIOR STORM WINDOW. SEE D1/A6.2. PAINT INTERIOR TRIM.
- A4. PAINT EXTERIOR OF EXISTING WINDOW FRAME.

THE KENSINGTON WINDOW REPLACEMENT

108 N. 4th Street
Norfolk NE 68701



THE FOLLOWING PROJECT NOTES ARE TYPICAL AND APPLICABLE TO ALL PORTIONS OF THE BUILDING

1. ALL DIMENSIONS ARE FACE OF FINISH TO FACE OF FINISH UNLESS NOTED OTHERWISE.
2. DO NOT SCALE FROM DRAWINGS.
3. VERIFY ALL DIMENSIONS AND REPORT ANY DISCREPANCIES TO THE ARCHITECT IMMEDIATELY.
4. REFER TO WINDOW SCHEDULE ON SHEETS A6.1 AND A6.2 FOR WORK REQUIRED AT ALL WINDOWS.
5. SEAL ALL JOINTS AT WINDOWS.
6. INSULATE ALL VOIDS AND CAVITIES WITH EXPANDABLE FOAM INSULATION.

**ALLEY•POYNER
MACCHIETTO**
ARCHITECTURE
1516 Cuming Street
Omaha, NE 68102
Ph: 402.341.1544
Fx: 402.341.4735
alleypoynern.com

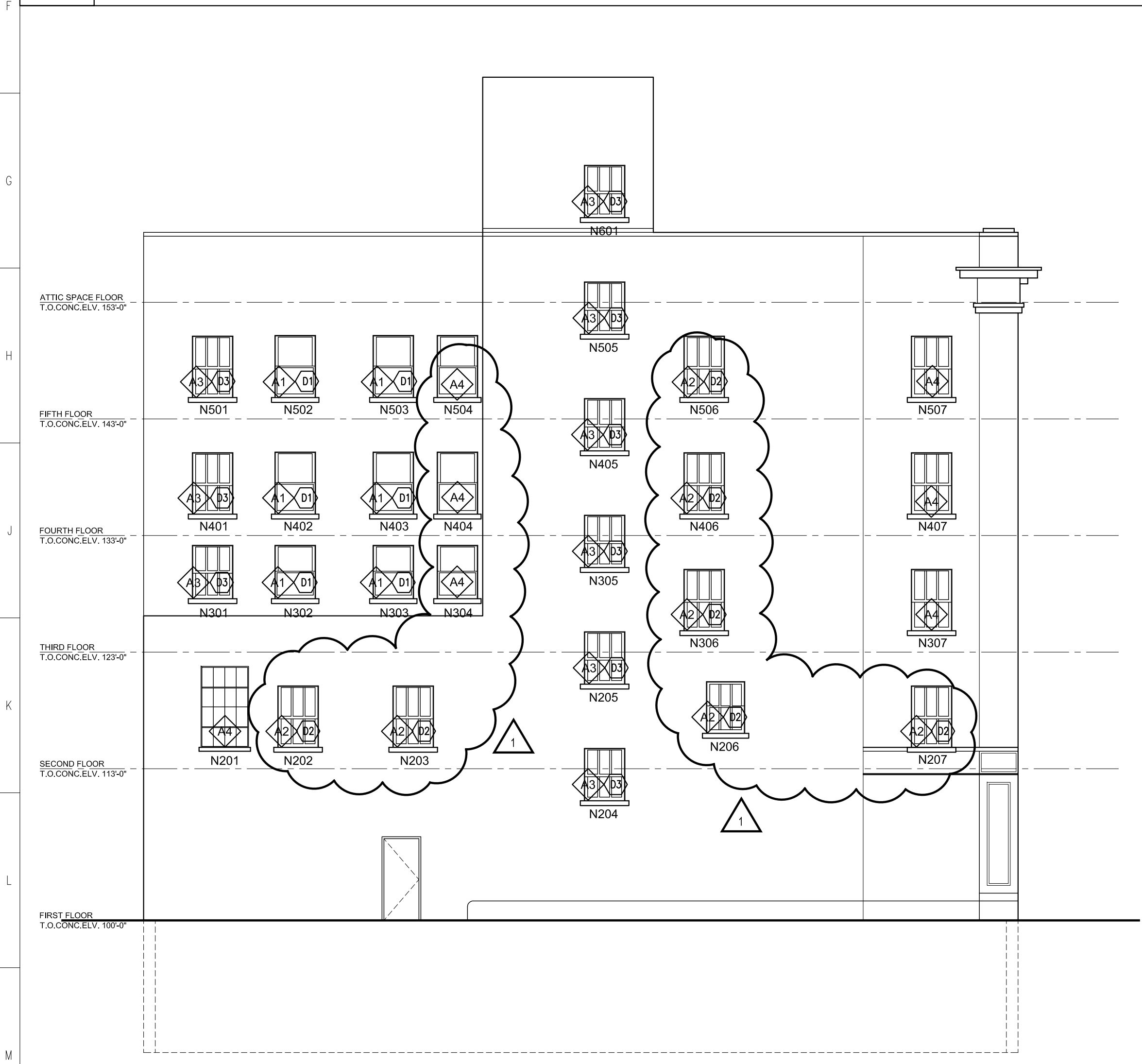


5-2-2011 - POST-BID

REVISION	DATE
PROJECT NUMBER: 10096	
DATE: 03/28/2011	
COPYRIGHT © 2011 ALLEY•POYNER MACCHIETTO ARCHITECTURE, P.C.	

EXTERIOR ELEVATIONS

A2.1



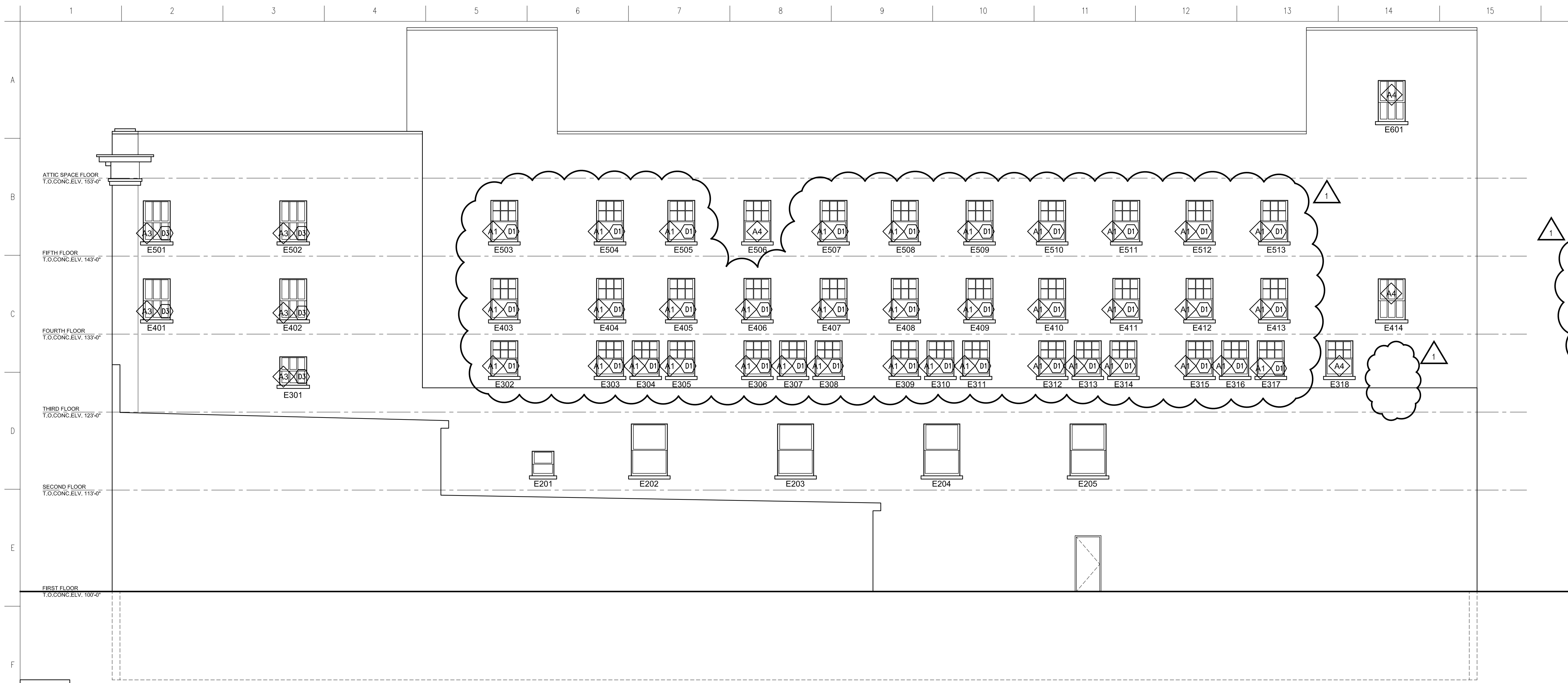
M1 EXTERIOR ELEVATION - NORTH

A2.1 SCALE: 1/8" = 1'-0"



M8 EXTERIOR ELEVATION - SOUTH

A2.1 SCALE: 1/8" = 1'-0"



(D1) DEMOLITION KEYED NOTES:

D1. REMOVE EXISTING WOOD SASHES, ALUMINUM STORM WINDOW AND FRAME, AND COUNTERWEIGHTS. SEE M1/A6.2

D2. REMOVE EXISTING STEEL SASHES, ALUMINUM STORM WINDOW AND FRAME, AND COUNTERWEIGHTS. SEE M10/A6.2

D3. REMOVE EXISTING STORM WINDOWS AND FRAME. SEE D1/A6.2

(A1) GENERAL KEYED NOTES:

A1. INSTALL NEW ALUMINUM WINDOW AND FRAME. PATCH HOLES LEFT BY STORM WINDOW FRAMES. SEE M6/A6.2. PAINT INTERIOR TRIM.

A2. INSTALL NEW ALUMINUM WINDOW AND FRAME. PATCH HOLES LEFT BY STORM WINDOW FRAMES. SEE M14/A6.2. PAINT INTERIOR TRIM.

A3. PAINT EXTERIOR AND INTERIOR OF EXISTING WINDOW. PATCH HOLES LEFT BY STORM WINDOWS AND INSTALL NEW ALUMINUM INTERIOR STORM WINDOW. SEE D1/A6.2. PAINT INTERIOR TRIM.

A4. PAINT EXTERIOR OF EXISTING WINDOW FRAME.

THE KENSINGTON WINDOW REPLACEMENT

108 N. 4th Street
Norfolk NE 68701



- THE FOLLOWING PROJECT NOTES ARE TYPICAL AND APPLICABLE TO ALL PORTIONS OF THE BUILDING
1. ALL DIMENSIONS ARE FACE OF FINISH TO FACE OF FINISH UNLESS NOTED OTHERWISE.
 2. DO NOT SCALE FROM DRAWINGS.
 3. VERIFY ALL DIMENSIONS AND REPORT ANY DISCREPANCIES TO THE ARCHITECT IMMEDIATELY.
 4. REFER TO WINDOW SCHEDULE ON SHEETS A6.1 AND A6.2 FOR WORK REQUIRED AT ALL WINDOWS.
 5. SEAL ALL JOINTS AT WINDOWS.
 6. INSULATE ALL VOIDS AND CAVITIES WITH EXPANDABLE FOAM INSULATION.

F1 EXTERIOR ELEVATION - EAST
A2.2 SCALE: 1/8" = 1'-0"

**ALLEY•POYNER
MACCHIETTO
ARCHITECTURE** 1516 Cuming Street
Omaha, NE 68102
Ph: 402.341.1544
Fx: 402.341.4735
alleypoyner.com



1 5-2-2011 - POST-BID

REVISION	DATE
PROJECT NUMBER: 10096	
DATE: 03/28/2011	

COPYRIGHT © 2011
ALLEY•POYNER MACCHIETTO ARCHITECTURE, P.C.

EXTERIOR ELEVATIONS

A2.2

WINDOW SCHEDULE

MARK	EXIST. FRAME TYPE			NEW FRAME TYPE		DETAILS			REMARKS
	SIZE	MATERIAL	FINISH	MATERIAL	FINISH	HEAD	JAMB	SILL	
W411	4'-9" X 5'-6"	WD	PNT	ALUM	PREFIN	M6/A6.2	M6/A6.2	M6/A6.2	
W412	4'-9" X 5'-6"	WD	PNT	ALUM	PREFIN	M6/A6.2	M6/A6.2	M6/A6.2	
W413	4'-9" X 5'-6"	WD	PNT	ALUM	PREFIN	M6/A6.2	M6/A6.2	M6/A6.2	
W414	4'-9" X 5'-6"	WD	PNT	ALUM	PREFIN	M6/A6.2	M6/A6.2	M6/A6.2	
W415	4'-9" X 5'-6"	WD	PNT	ALUM	PREFIN	M6/A6.2	M6/A6.2	M6/A6.2	
W416	4'-9" X 5'-6"	WD	PNT	ALUM	PREFIN	M6/A6.2	M6/A6.2	M6/A6.2	
W417	4'-9" X 5'-6"	WD	PNT	ALUM	PREFIN	M6/A6.2	M6/A6.2	M6/A6.2	
W418	4'-9" X 5'-6"	WD	PNT	ALUM	PREFIN	M6/A6.2	M6/A6.2	M6/A6.2	
W501	4'-9" X 5'-6"	WD	PNT	ALUM	PREFIN	M6/A6.2	M6/A6.2	M6/A6.2	
W502	4'-9" X 5'-6"	WD	PNT	ALUM	PREFIN	M6/A6.2	M6/A6.2	M6/A6.2	
W503	4'-9" X 5'-6"	WD	PNT	ALUM	PREFIN	M6/A6.2	M6/A6.2	M6/A6.2	
W504	4'-9" X 5'-6"	WD	PNT	ALUM	PREFIN	M6/A6.2	M6/A6.2	M6/A6.2	
W505	4'-9" X 5'-6"	WD	PNT	ALUM	PREFIN	M6/A6.2	M6/A6.2	M6/A6.2	
W506	4'-9" X 5'-6"	WD	PNT	ALUM	PREFIN	M6/A6.2	M6/A6.2	M6/A6.2	
W507	4'-9" X 5'-6"	WD	PNT	ALUM	PREFIN	M6/A6.2	M6/A6.2	M6/A6.2	
W508	4'-9" X 5'-6"	WD	PNT	ALUM	PREFIN	M6/A6.2	M6/A6.2	M6/A6.2	
W509	4'-9" X 5'-6"	WD	PNT	ALUM	PREFIN	M6/A6.2	M6/A6.2	M6/A6.2	
W510	4'-9" X 5'-6"	WD	PNT	ALUM	PREFIN	M6/A6.2	M6/A6.2	M6/A6.2	
W511	4'-9" X 5'-6"	WD	PNT	ALUM	PREFIN	M6/A6.2	M6/A6.2	M6/A6.2	
W512	4'-9" X 5'-6"	WD	PNT	ALUM	PREFIN	M6/A6.2	M6/A6.2	M6/A6.2	
W513	4'-9" X 5'-6"	WD	PNT	ALUM	PREFIN	M6/A6.2	M6/A6.2	M6/A6.2	
W514	4'-9" X 5'-6"	WD	PNT	ALUM	PREFIN	M6/A6.2	M6/A6.2	M6/A6.2	
W515	4'-9" X 5'-6"	WD	PNT	ALUM	PREFIN	M6/A6.2	M6/A6.2	M6/A6.2	
W516	4'-9" X 5'-6"	WD	PNT	ALUM	PREFIN	M6/A6.2	M6/A6.2	M6/A6.2	
W517	4'-9" X 5'-6"	WD	PNT	ALUM	PREFIN	M6/A6.2	M6/A6.2	M6/A6.2	
W518	4'-9" X 5'-6"	WD	PNT	ALUM	PREFIN	M6/A6.2	M6/A6.2	M6/A6.2	

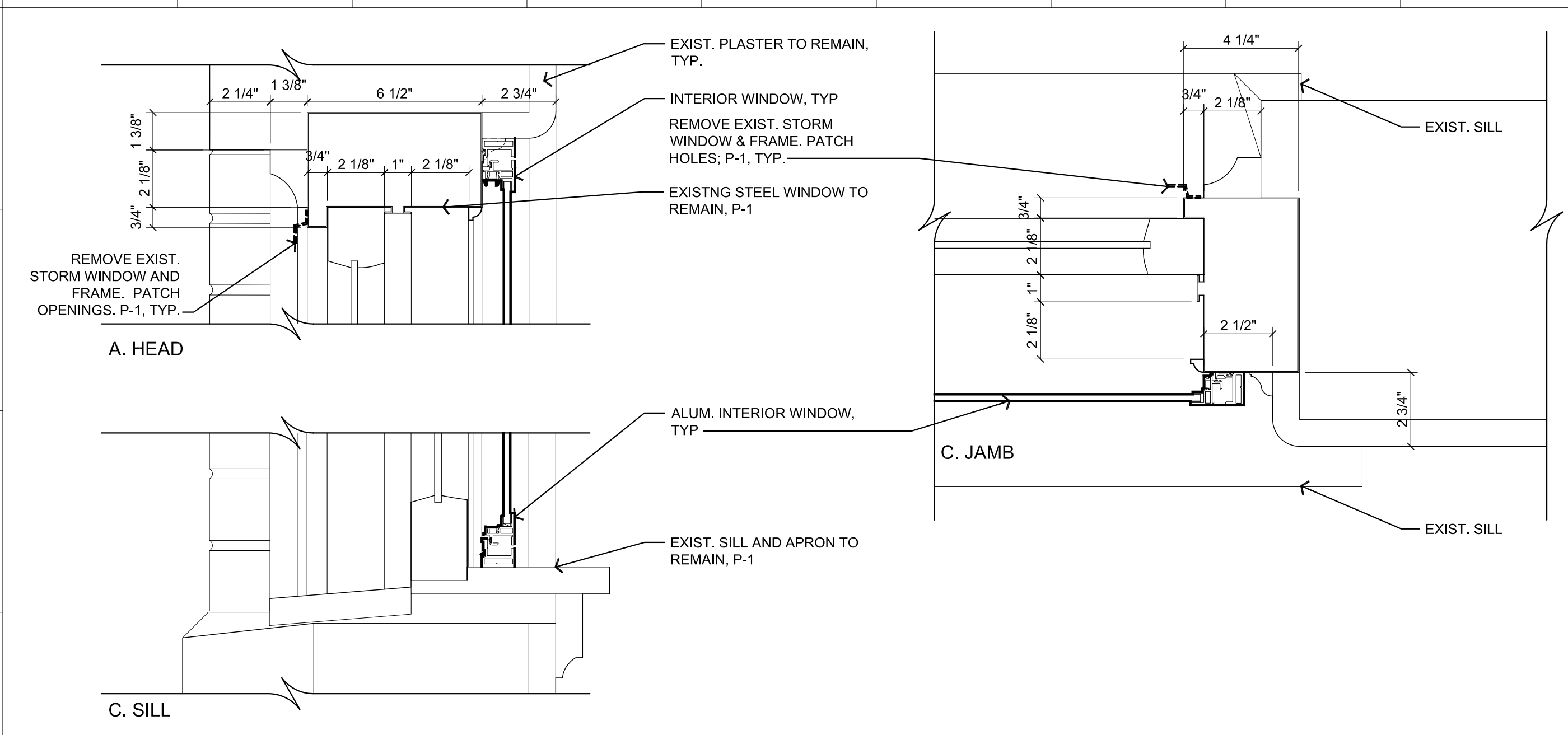
THE KENSINGTON WINDOW REPLACEMENT

108 N. 4th Street
Norfolk NE 68701

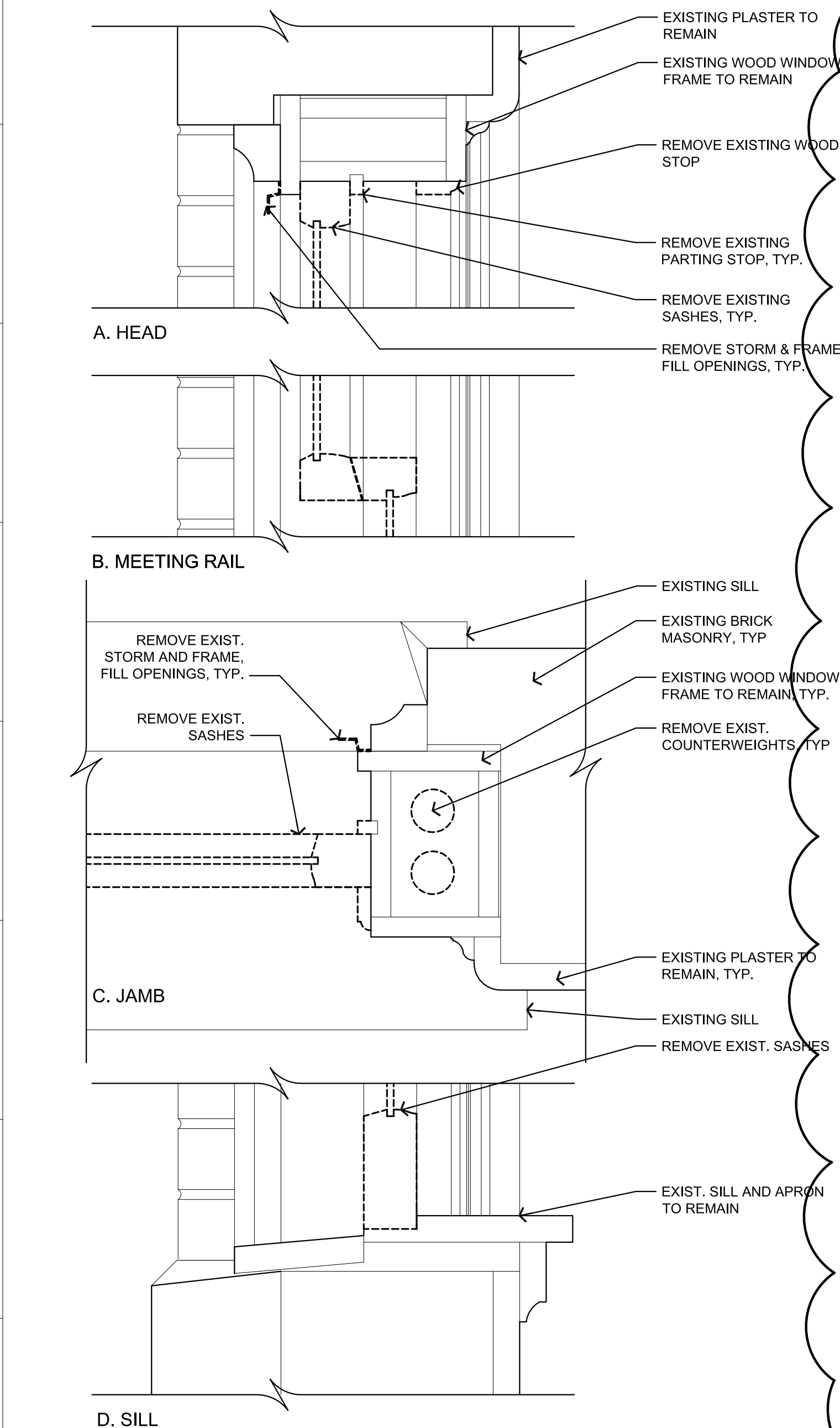


THE FOLLOWING PROJECT NOTES ARE TYPICAL AND APPLICABLE TO ALL PORTIONS OF THE BUILDING

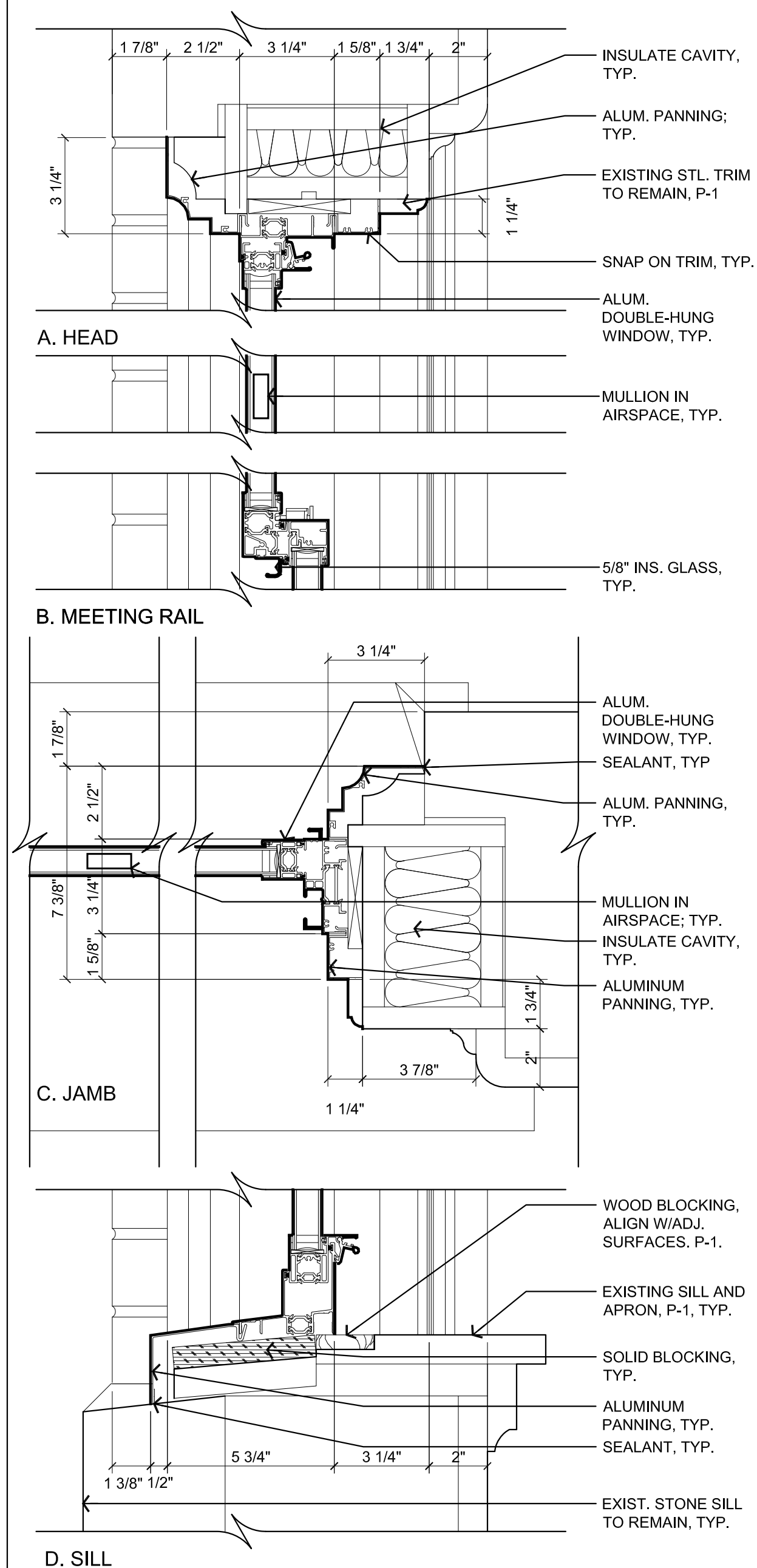
1. ALL DIMENSIONS ARE FACE OF FINISH TO FACE OF FINISH UNLESS NOTED OTHERWISE.
2. DO NOT SCALE FROM DRAWINGS.
3. VERIFY ALL DIMENSIONS AND REPORT ANY DISCREPANCIES TO THE ARCHITECT IMMEDIATELY.
4. REFER TO WINDOW SCHEDULE ON SHEETS A6.1 AND A6.2 FOR WORK REQUIRED AT ALL WINDOWS.
5. SEAL ALL JOINTS AT WINDOWS.
6. INSULATE ALL VOIDS AND CAVITIES WITH EXPANDABLE FOAM INSULATION.



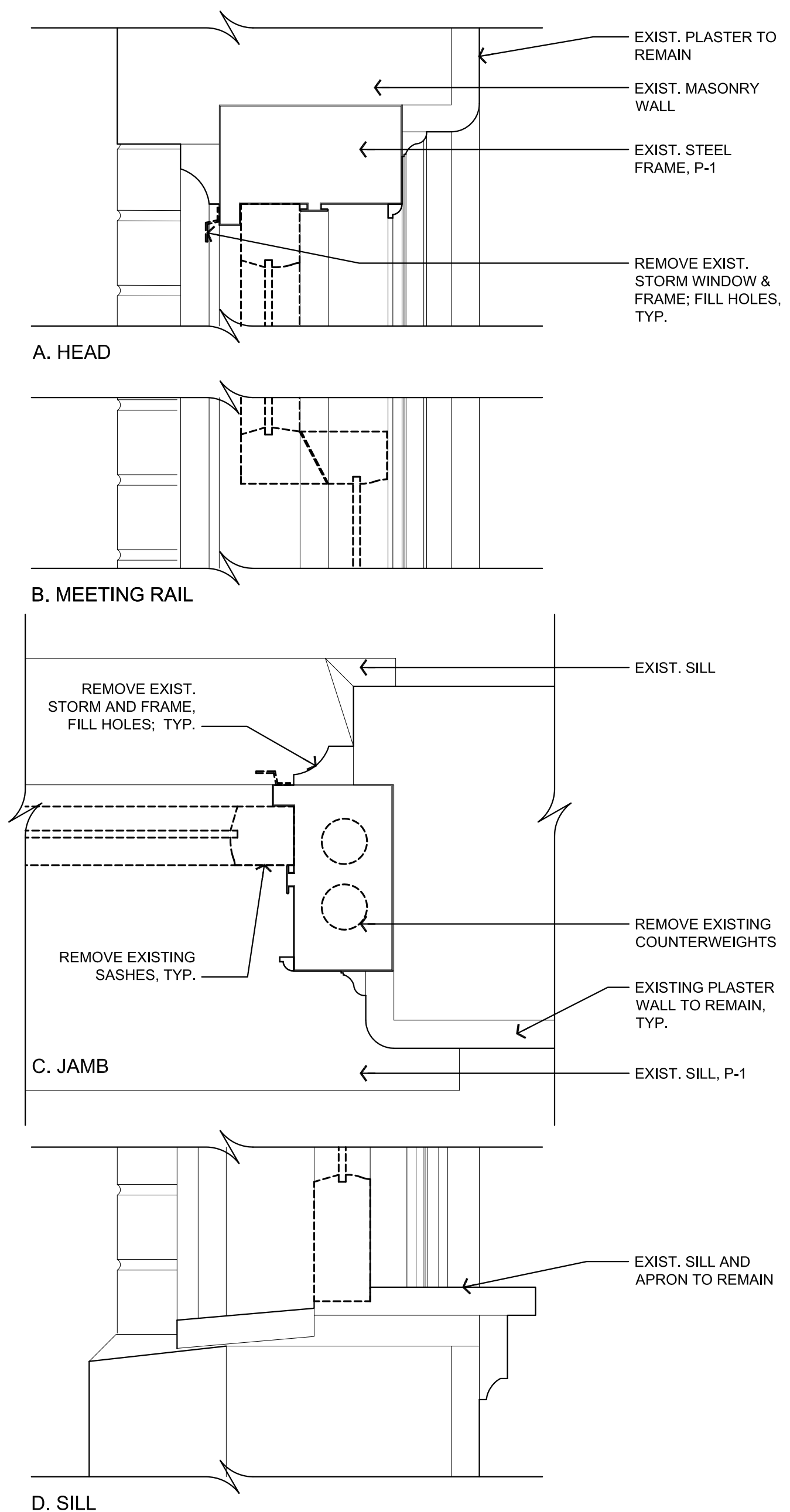
D1 INTERIOR STORM WINDOW AT STEEL WINDOW
A6.2 SCALE: 3" = 1'-0"



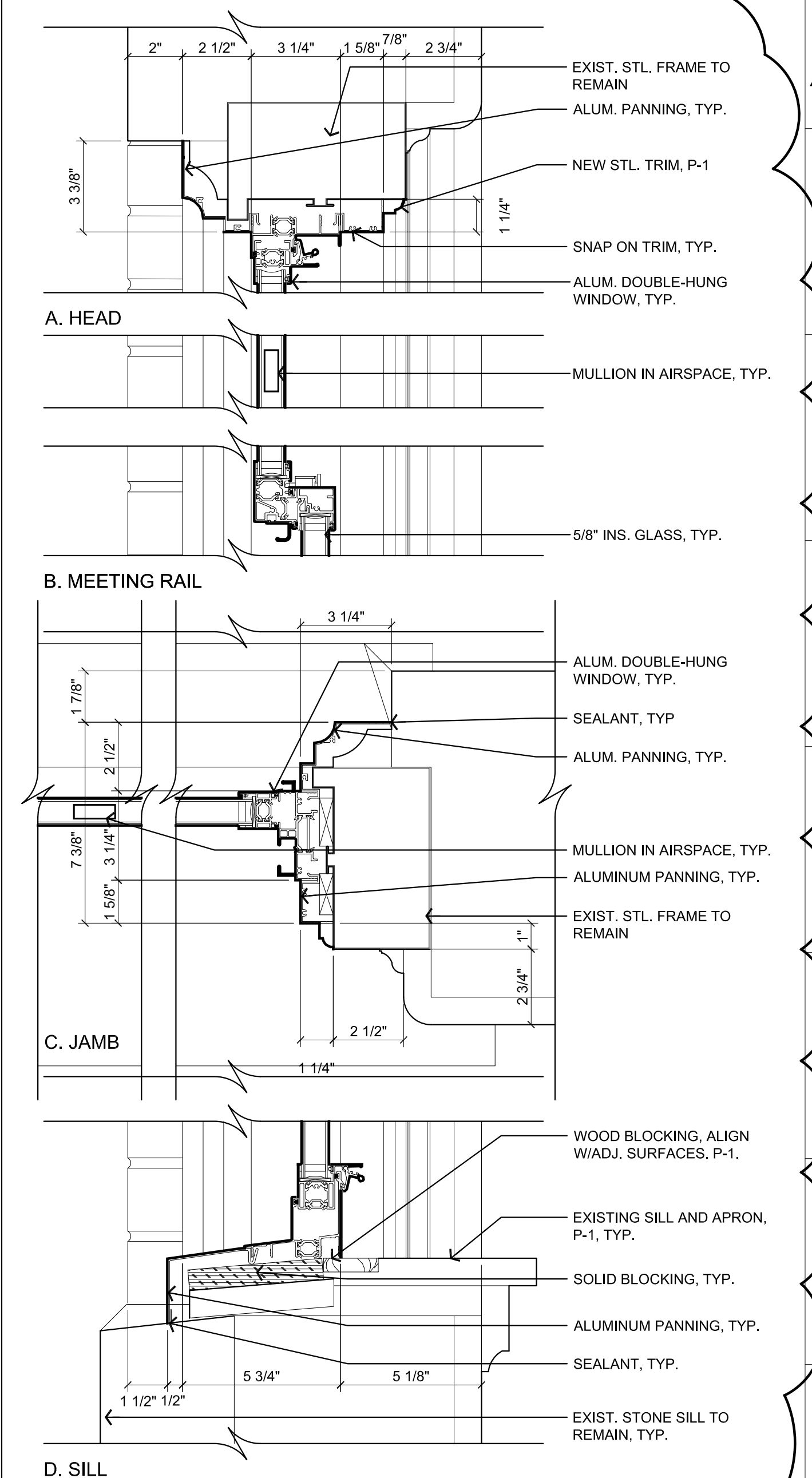
M1 EXISTING WOOD WINDOW - DEMO
A6.2 SCALE: 3" = 1'-0"



M6 ALUM. WINDOW INFILL - WD. SASH
A6.2 SCALE: 3" = 1'-0"



M10 EXISTING STEEL WINDOW - DEMO
A6.2 SCALE: 3" = 1'-0"



M14 ALUMINUM WINDOW INFILL - STL. SASH
A6.2 SCALE: 3" = 1'-0"

**ALLEY•POYNER
MACCHIETTO**
ARCHITECTURE
1516 Cuming Street
Omaha, NE 68102
Ph: 402.341.1544
Fx: 402.341.4735
alleypoyner.com



5-2011 - POST-BID

REVISION _____ DATE _____
PROJECT NUMBER: 10096
DATE: 03/28/2011
COPYRIGHT © 2011
ALLEY•POYNER MACCHIETTO ARCHITECTURE, P.C.

WINDOW DETAIL

A6.2